

CHROME USERS...

3 simple steps to access our editable worksheets

Please wait...

If this message is not eventually replaced by the proper contents of the document, your PDF viewer may not be able to display this type of document.

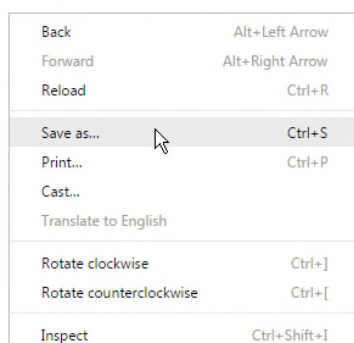
You can upgrade to the latest version of Adobe Reader for Windows®, Mac, or Linux® by visiting http://www.adobe.com/go/reader_download.

For more assistance with Adobe Reader visit <http://www.adobe.com/go/acrreader>.

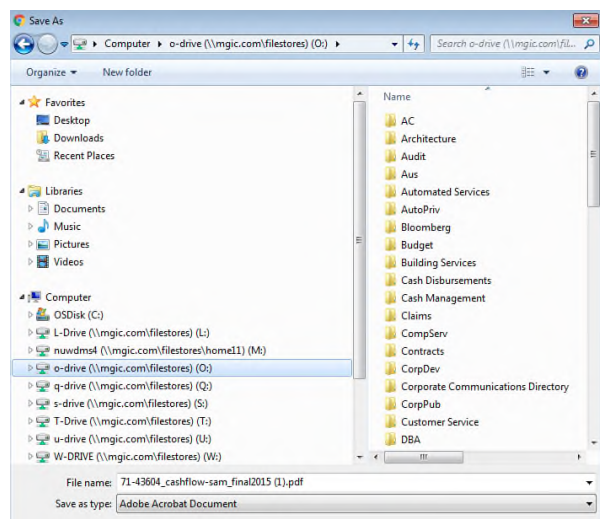
Windows is either a registered trademark or a trademark of Microsoft Corporation in the United States and/or other countries. Mac is a trademark of Apple Inc., registered in the United States and other countries. Linux is the registered trademark of Linus Torvalds in the U.S. and other countries.

Step 1: Right click on mouse

Step 2: Select Save as...



The Save As window will appear; save the worksheet to your desktop or a preferred folder:



Step 3: Locate the place/folder you saved the worksheet to and open the worksheet.